

(2004/10/23

2004/5/20)

Coagulase Negative Staphylococci (CNS)

*S. saprophyticus*

(CNS)

*S. epidermidis*

*S. xylosus*

(CNS)

## **Adherence of Coagulase Negative Staphylococci to Human Uroepithelial Cells**

**Nadia M. Sultan**

**Soubhi H. Khalaf**

*Ministry of Education*

*College of Nursing  
Mosul University*

### **ABSTRACT**

The ability of Adhesion of Coagulase Negative staphylococci (CNS) to human uroepithelial was studied. There was statistically significant difference between the species of (CNS) in their adhesions ability. The highest rate of adhesion was for *S. saprophyticus* followed by *S. xylosus* and the lowest was for *S. epidermidis*, It was also found that the nutritional media had a significant effect on the adhesion rate when using broth in comparison with nutrient agar.

Mucosal tissue

(A)

pili

(Lipotechoic acid)

(Tedford and Gustafson, 1977)

(*Staphylococcus saprophyticus*) (CNS)

(*Saureus*, *S. epidermidis*, *S. haemolyticus*)

(*S. aureur*)

*S. saprophyticus* (Fujita et al., 1992)

*S. epidermidis* periyretgral

(Skin cells)

(Colleen et al., 1977). buccal cells

tissuetropism

genetic specificty

Species specifcity

(Gibbons, 1977)

*S. saprophyticus*

(Mardh et al., 1979)

.....

**:Adherence**

:(Gurr, 1962) Giemsa's stain .1

**Uroepithelial cells isolation**

5 (3000xg) pH 7.5 30 (12 μM)

Van-Den Bosch et al., ) 15

.(1980

**Adherence to human uroepithelial cells**

24 37  
° 4 10 (5000xg) / 10<sup>9</sup>  
5  
° 37  
20 % 30 15

50

.(Van-Den Bosch et al., 1980)

**Influence of medium nature on adhesion**

Nutrient broth

:

° 37

° 4

**:Statistical Analysis**

Duncan method

CNS

(Steel and Torrie, 1980)

:

(Glauser, 1986, Maskell, 1979)

CNS

*S. xyosus*

CNS

(30.67±2.57)

*S. epidermidis saprophyticus*

(1)

(12.37±1.53) ( 1.46±0.25)

CNS

:1

±	CNS
30.67± 2.57 A	<i>S.saprophytticus</i>
12.37±1.53 B	<i>S. xylosus</i>
1. 46 ± 0.25 C	<i>S. epidermidis</i>

0.01 < p

.Duncan

(2 )

CNS

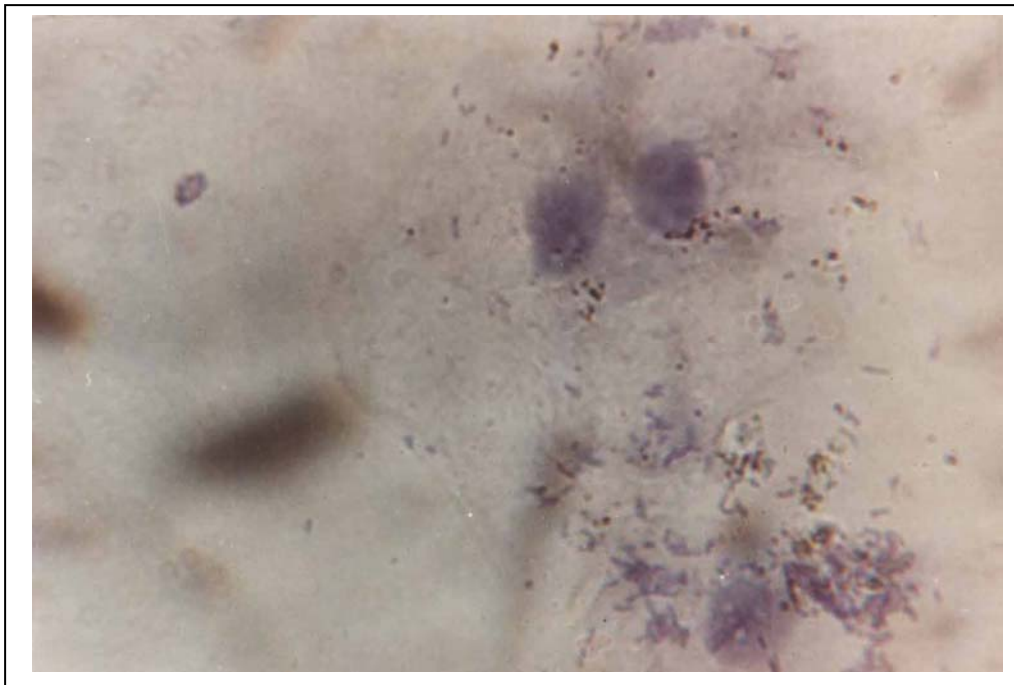
(0.01 < p)

.....

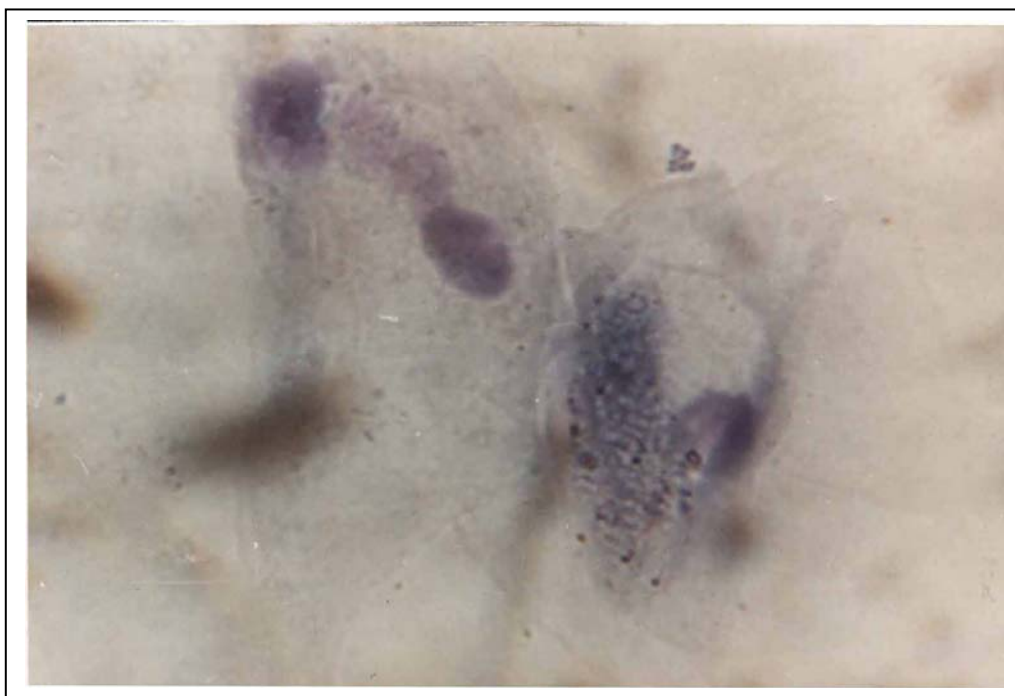
*S. saprophyticus* (1979) Mardh  
*S. epidermidis*

(1992) Fujita , *S. saprophyticus*  
*S.saprophyticus*

laukova (1994)  
*S. xylosus* CNS



*S. saprophyticus* :1  
.100X



*S. epidermidis* :2

.100X

:

CNS

(19.36±2.22) (12.7±1.63)

CNS

CNS

(P < 0.01)

(2)

CNS

CNS

: 2

<b>CNS</b>	
12.71 + 1.63 A	
19.36 + 2.22B	

p < 0.01

.Duncan

(2001)

(20.58 + 2.20) (3.26 + 1.08)

.2001

- Colleen, S., Hovelius, B., Wieslander, A. and Mardh, P.A., 1979. Surface properties of *Staphylococcus saprophyticus* and *Staphylococcus epidermidis* as studied by adherence test and two polymer aqueous phase systems. *Aeta. Pathol. Microbiol. Scand.*, Vol.87B, pp.321-328.
- Cruickshank, Duguid, J.P., Marmion, B.P. and Swain, R.H.A., 1975. *Medical Microbiology 2. The practice of Medical Microbiology*, 12<sup>th</sup> ed. Churchill Livingstone, England.
- Fujita, K., Yokota T., Oguri, Fujime, M. and Kitagawa, R., 1992. In vitro adherence of *Staphylococcus saprophyticus*, *Staphylococcus epidermidis*, *Staphylococcus hamolyticus* and *Staphylococcus aureus* to human ureter. *Urol. Res.*, Vol.20, pp.399-402.
- Gibbons, R.J., 1977. Adherence of bacteria to host tissue. In Dschlessinger ed. *Microbiology American souaty for Microbiology*, Washington, D.C. pp.345-406.
- Glauser, M.P., 1986. Urinary tract infection and pyelonephritis. In: *Medical Microbiology and infectious Disease*. Saunders, West Washington, Square, Philadelphia.
- Laukova, A., 1994. Antimicrobial susceptibility of ruminal coagulase negative Staphylococci. *New Microbiol.*, Vol.17(2), pp.123-123.
- Mardh, P.A., Colleen, S. and Hovelius, B., 1979. Attachment of bacteria to exfoliated cells from the urogenital tract. *Invest. Urol.*, Vol.16, pp.322-326.
- Maskell, R., 1979. Importance of coagulase negative staphylococci as pathogens in the urinary tract. *Infection. Lauat.*, Vol.21, pp.1155-1158.
- Pithelial cells and urinary virulence of *Escherichia coli* infect. *Immun.*, Vol.29, pp.226-233.
- Steel, R.G.D. and Torrie, J.H., 1980. *Prinapals and Procedures of statistics*. 2<sup>nd</sup> ed. Mc Graw-Hill comrany inc. London.
- Tedford, R.H. and Gustafson, E.P., 1977. Adhence of *Escherichia coli* to human mucosal cells mediated by mannose receptors. *Nature*, Vol.265, pp.223-226.
- Van Den Bosch, J.F., Verboom-sohmer, V., Postma, P., de Graaff, J. and Maclaren, D.M., 1980. Mannos, sensitive and Mannose resistant adherence to human uroepithelial cells and urinary virulence of *Escherichia coli* infect. *Immune.*, Vol.29, pp.226-233.